

THE INFERNAL DREAM OF MUTT AND JEFF

Installation views - Site Gallery Sheffield (2011)



Entrance - *The Infernal Dream of Mutt and Jeff*, 16mm archival film projected with a 16mm film looper.



Large gallery - 3 channel video projection with vintage 16mm camera, desk, chair, telephone, lamp, fountain pen



Large gallery - blackboard, clock, paper, pegboard and 16mm camera



Large gallery - 16mm projector and loop



Small gallery - wall charts (ink on paper), flatscreen monitor playing *On Strike* (1920)



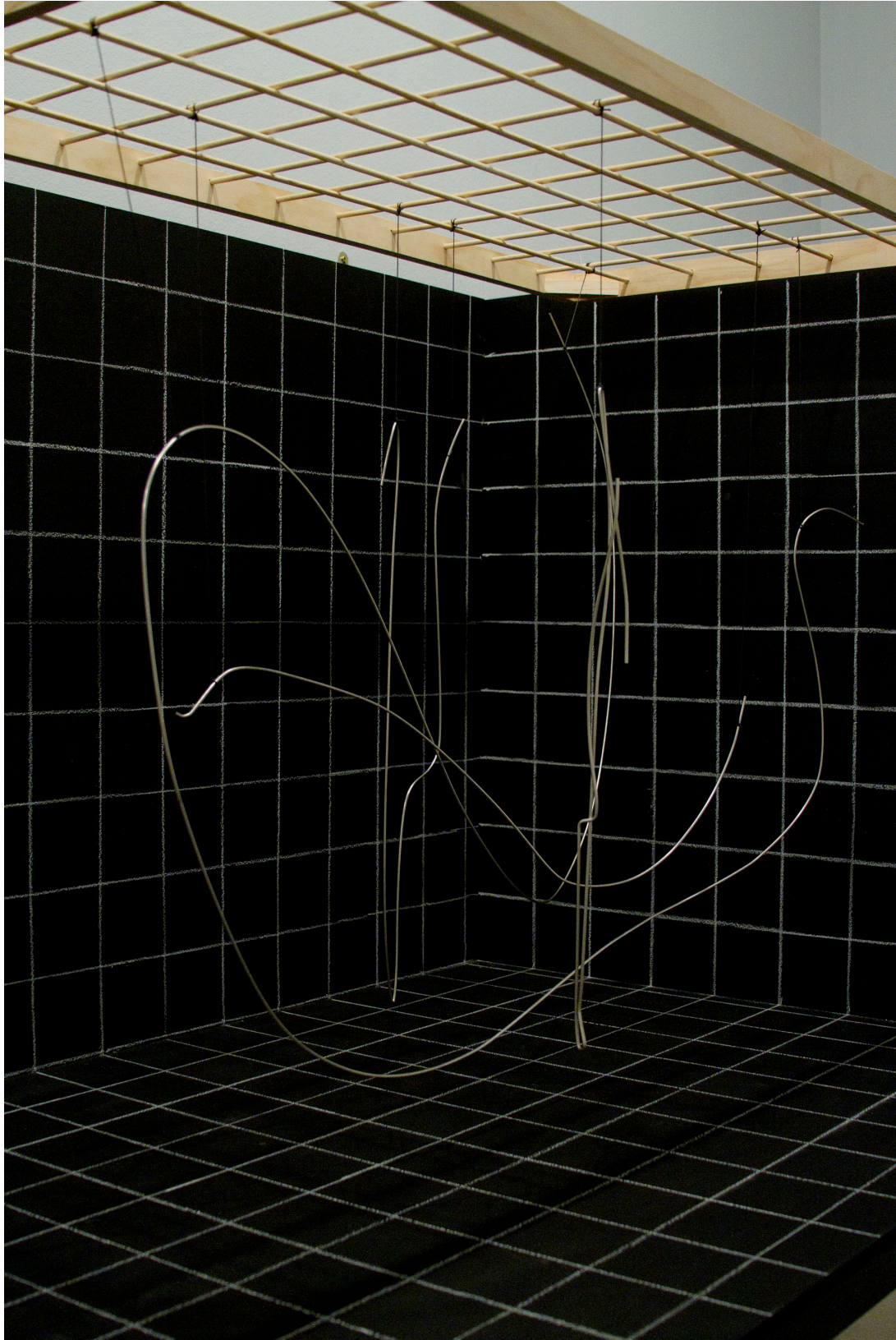
Small gallery - wall charts and chronocyclograph photographs



Small gallery - chronocyclograph photographs and wire models



Small gallery - chronocyclograph photograph - *conducting an orchestra*



Wire model based on the chronocyclograph photograph - *conducting an orchestra*

RE-ANIMATION?

No one before the surrealists perceived how destitution - not only social but architectonic, the poverty of interiors, enslaved and enslaving objects - can be suddenly transformed into revolutionary nihilism.

Walter Benjamin (1929)



Fig. 1 - R. Mutt exhibits 'Fountain' (1917)

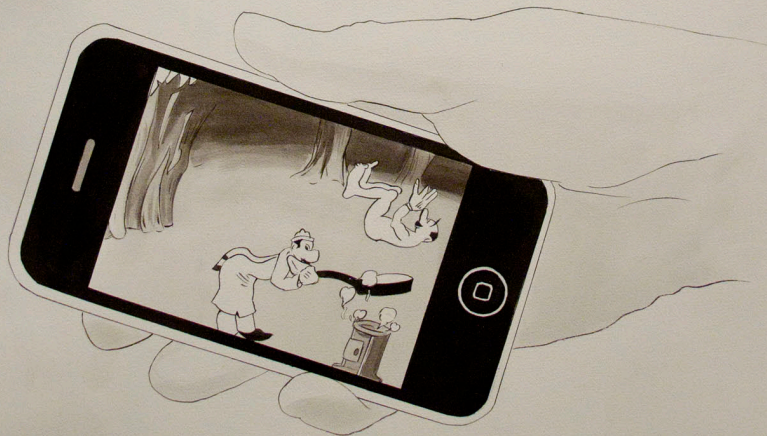


Fig. 2 - A. Mutt fries a devil (c 1930)

CAN THINGS BE OTHER THAN THEY ARE?